

Cockroaches- Know Your Enemy



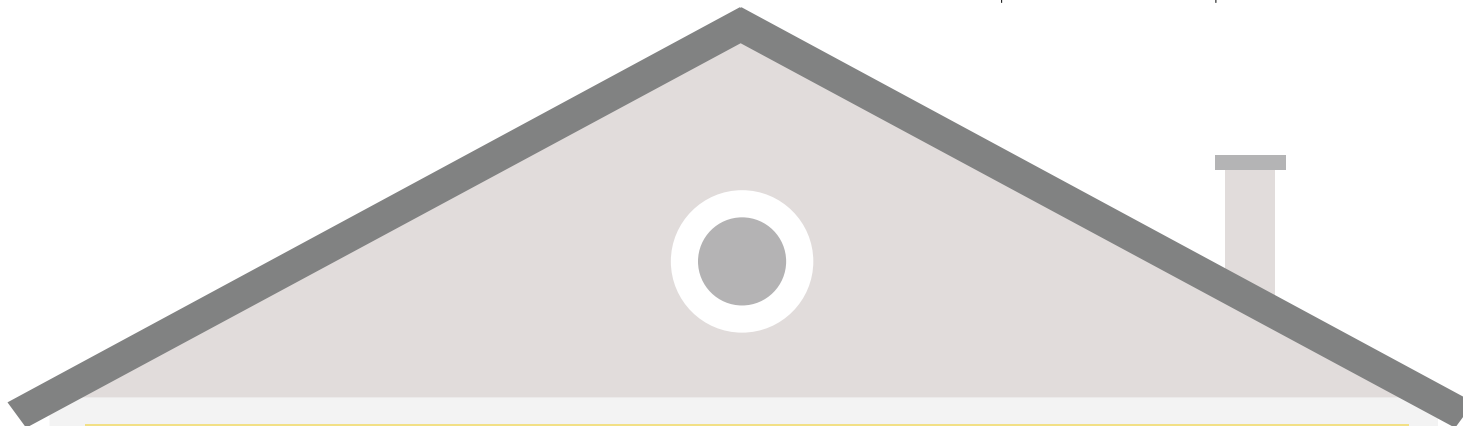
Inside



Drains



Outside



German Cockroach

Size: Approximately 1/2 inch long.

Habitat: Prefer warm, moist areas near food preparation and/or storage.

Special characteristics:

- Two dark stripes on the back.
- Females carry egg cases until ready to hatch.



German Cockroach



German Cockroach Lifecycle

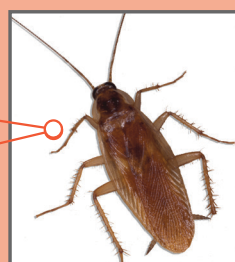
Brown Banded Cockroach

Size: Approximately 1/2 inch long.

Habitat: Prefer warm indoor areas, electrical appliances, and boiler rooms. Not usually found in food areas.

Special characteristics:

- Younger stages have horizontal bands around thorax.
- Females fasten egg cases to areas such as walls and ceilings.
- Scavengers, will eat wallpaper paste, book adhesive, etc.



Brown Banded Cockroach



Brown Banded Cockroach Lifecycle

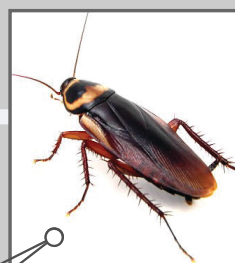
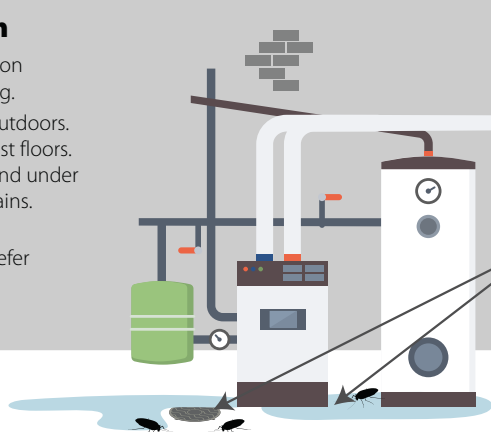
American Cockroach

Size: Largest species of common cockroach - 1.5 to 2 inches long.

Habitat: Found indoors and outdoors. Common in basements and first floors. Associated with plumbing found under sinks, in bathtubs, and near drains.

Special characteristics:

- Feed on a variety of foods, prefer decaying organic matter.



American Cockroach



American Cockroach Lifecycle

Oriental Cockroach

Size: 1 to 1.25 inches long.

Habitat: Sometimes called "waterbugs" because they live in dark, damp areas. Often found outdoors, commonly associated with decaying organic matter. May enter facilities through floor drains.

Special characteristics:

- Feed on garbage and decaying organic matter.
- Slow-moving compared to other common cockroach species.



Oriental Cockroach



Oriental Cockroach Lifecycle

DCPH-A
Defense Centers for Public Health - Aberdeen
(formerly U.S. Army Public Health Center)

